

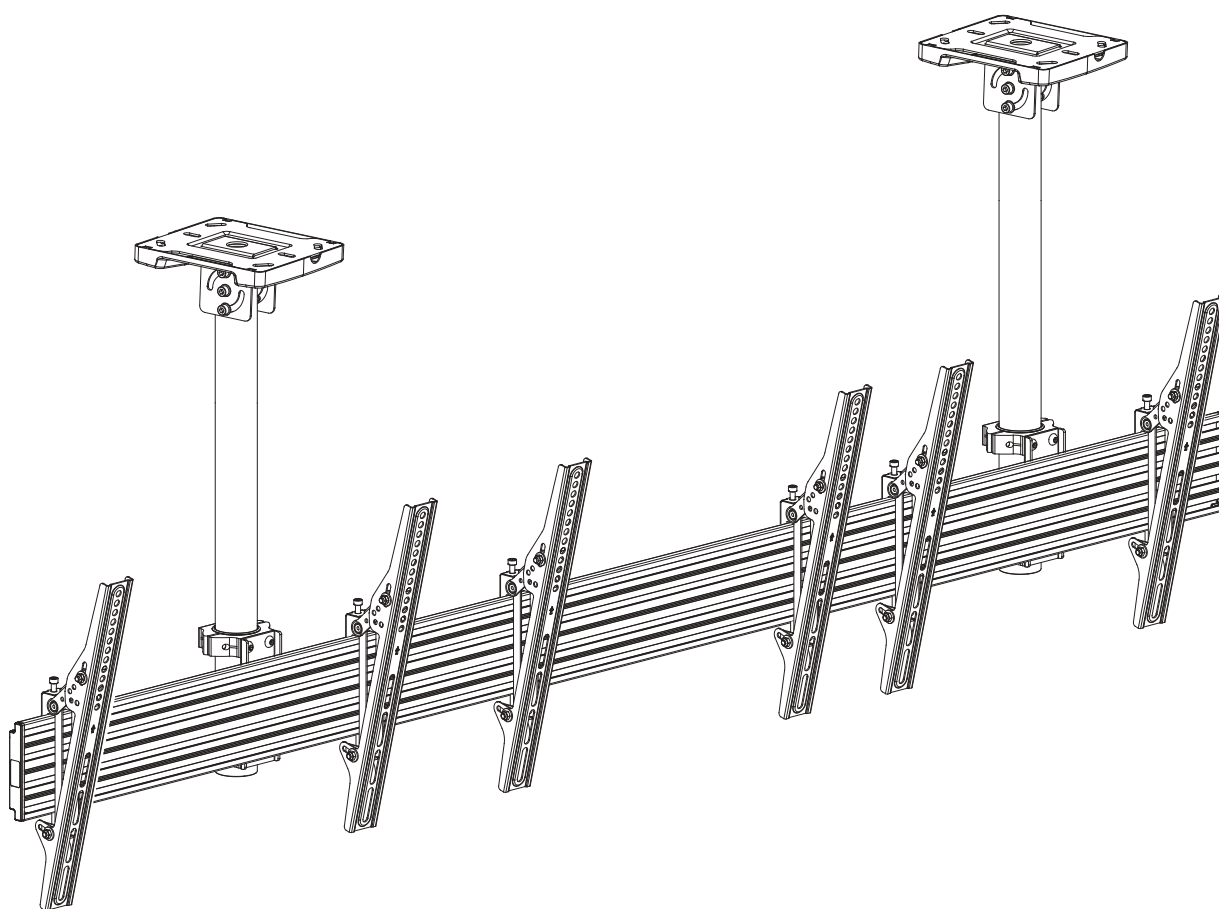
INSTALLATION GUIDE

SECM3X43L

Support 32" to 43" Screen Size

Max Load Capacity: 66lbs (30 kg) Per Screen

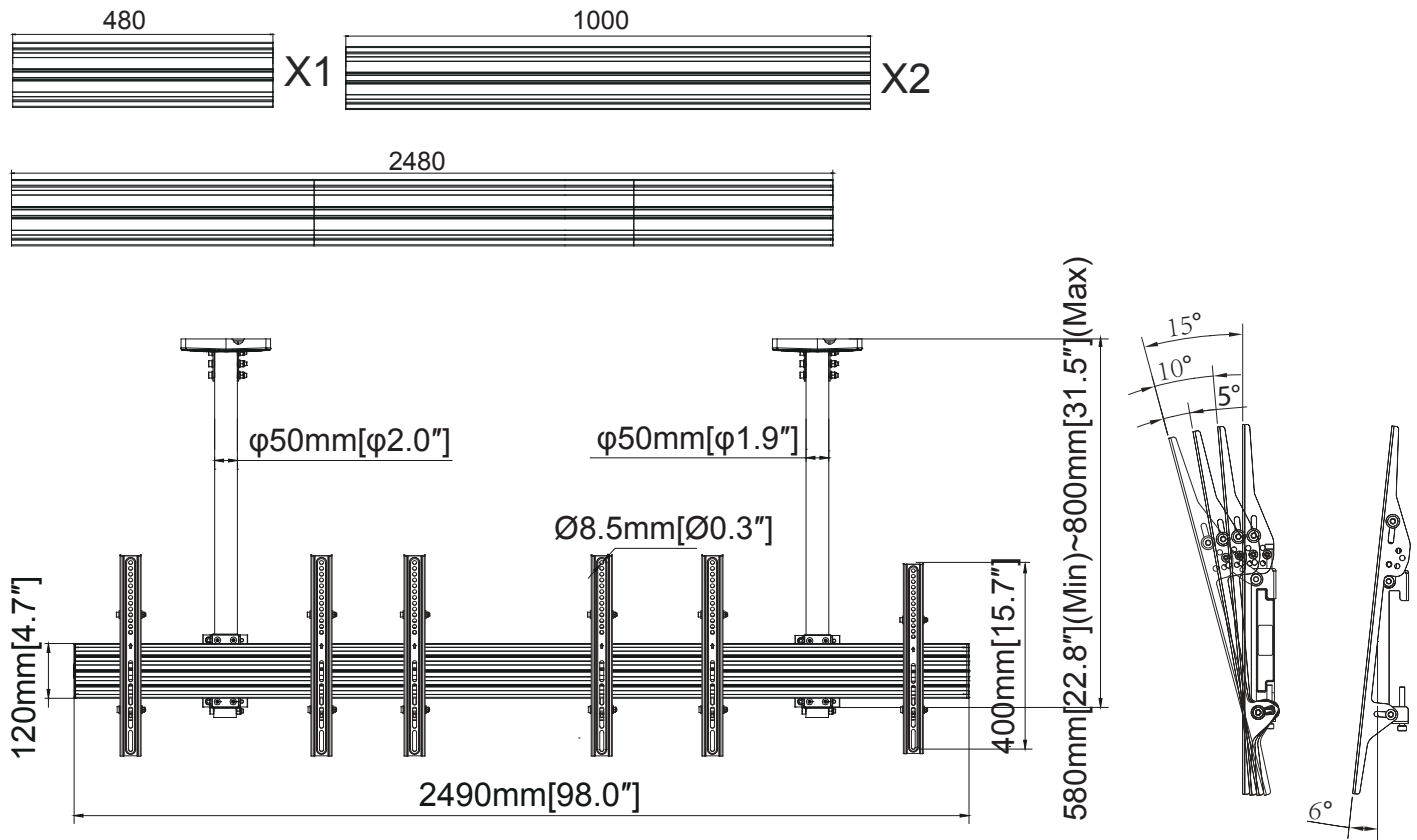
VESA 100x100mm / 400x400mm compatible



⚠ WARNING

- Be sure to read this entire manual thoroughly and you fully understand all the instructions and warning before attempting to begin your installation.
- This product should only be installed by someone who has a basic knowledge of building construction, installations and fully understands these instructions.
- Always have someone assist you to lift and position your equipment.
- Tighten screws and bolts firmly, but do not over tighten. Over tightening can damage the items and greatly reduce their ability to hold. Please refer to suggested torque values where applicable in these instructions.

Dimensions(mm)



Parts list

A1	A2	A3	A4	A5	A6	A7
M5X15	M6X15	M8X25	Ø16X Ø6.2X1.5	M8X45	Ø16X Ø8.2X1.5	Ø13X Ø8.2X13
X4	X4	X4	X4	X4	X4	X4

X3

B1	B2	B3	B4	B5	B6
M8X10	M8	Open-wrench	3mm	5mm	6mm
X8	X8	X1	X1	X1	X1

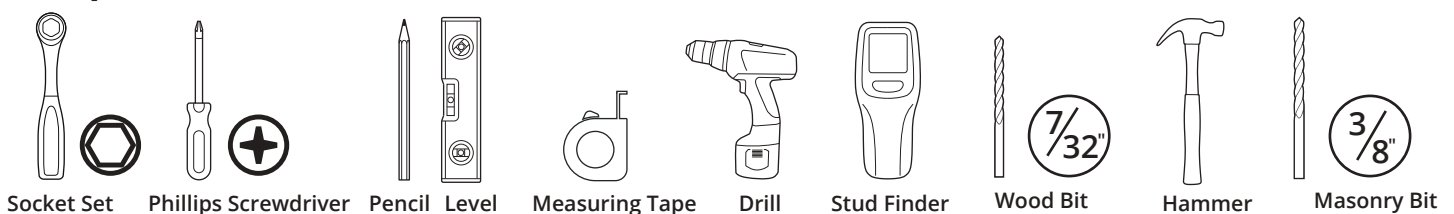
X1

C1	C2	C3	C4	C5	C6
M8X70	Ø16X Ø8.2X1.5	M8X60	M8	Lag bolt	Ø16X Ø8.2X1.5
X3	X6	X1	X4	X6	X6

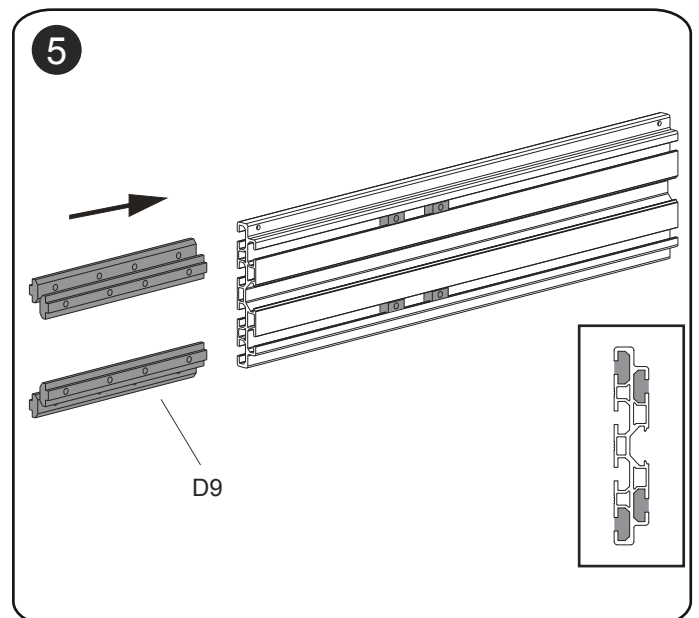
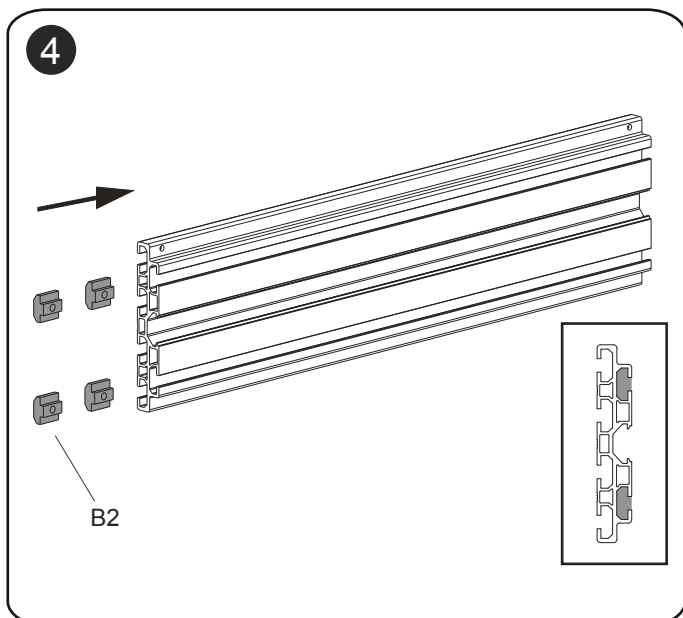
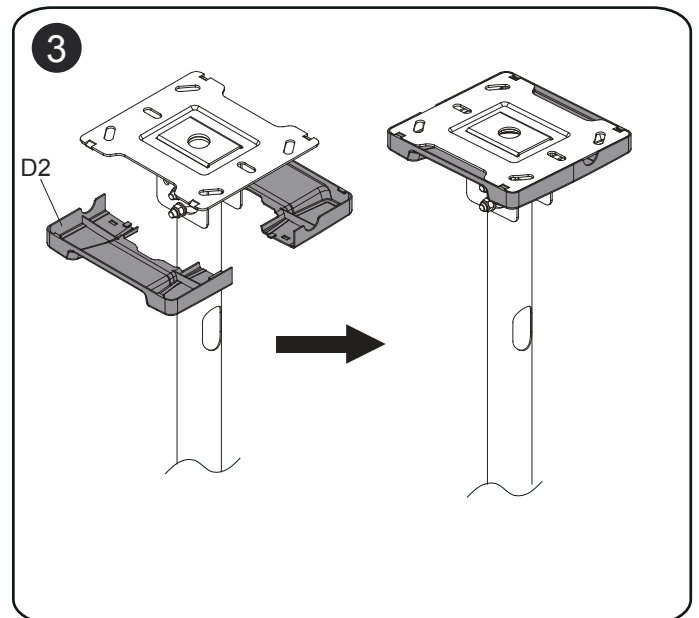
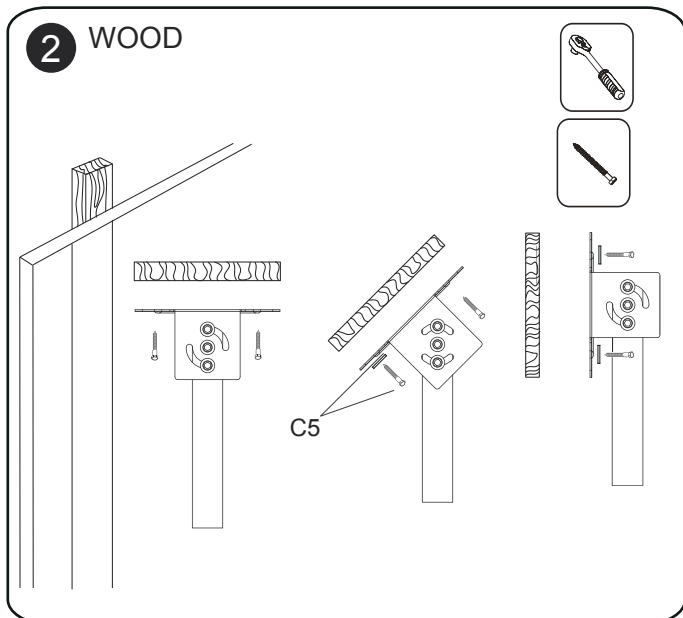
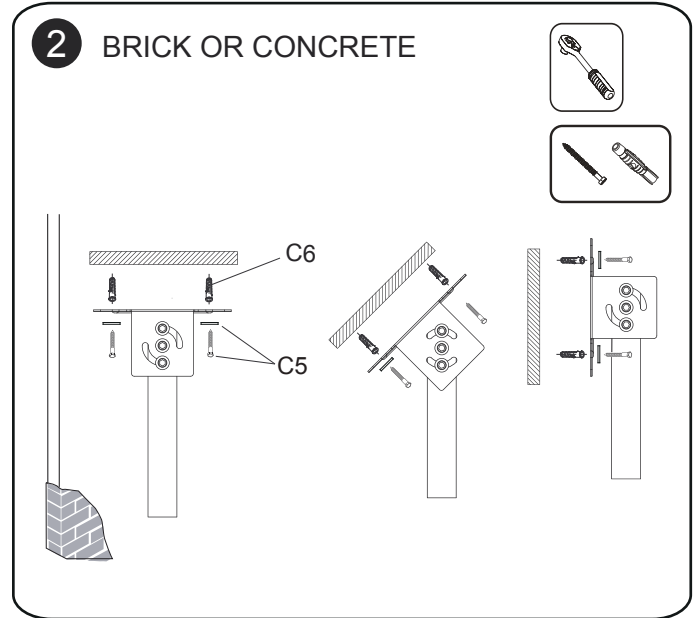
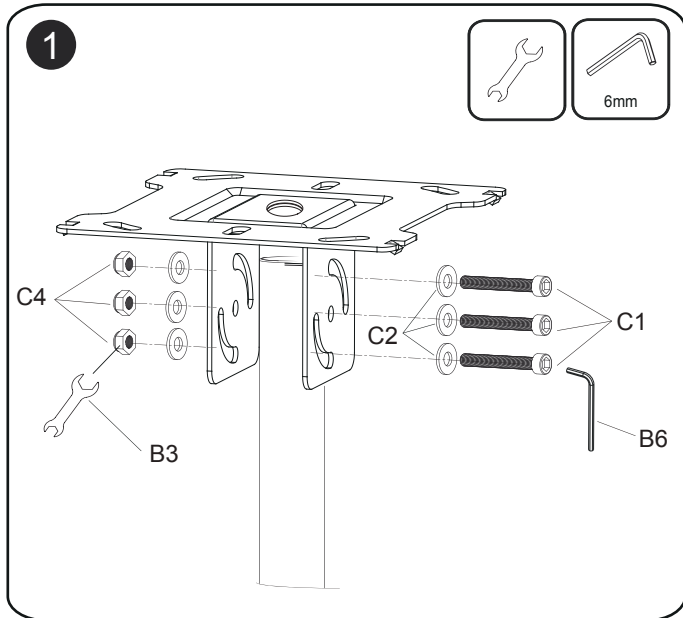
X2

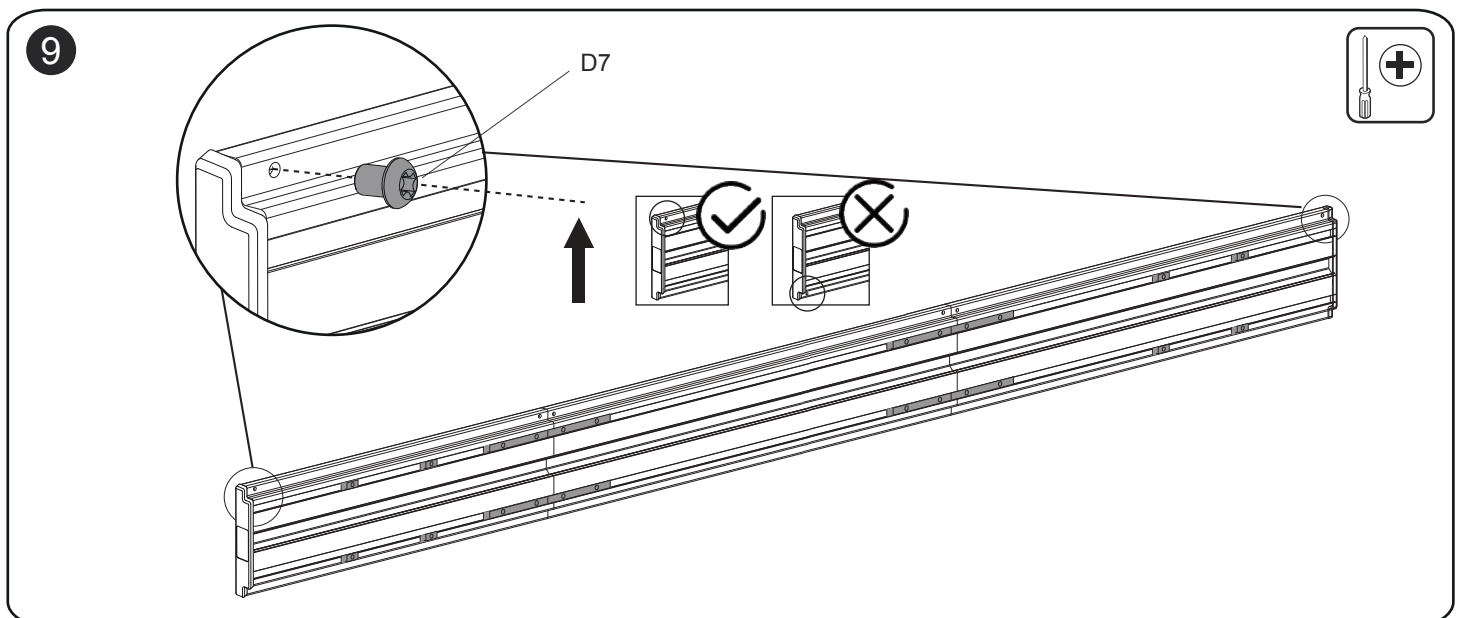
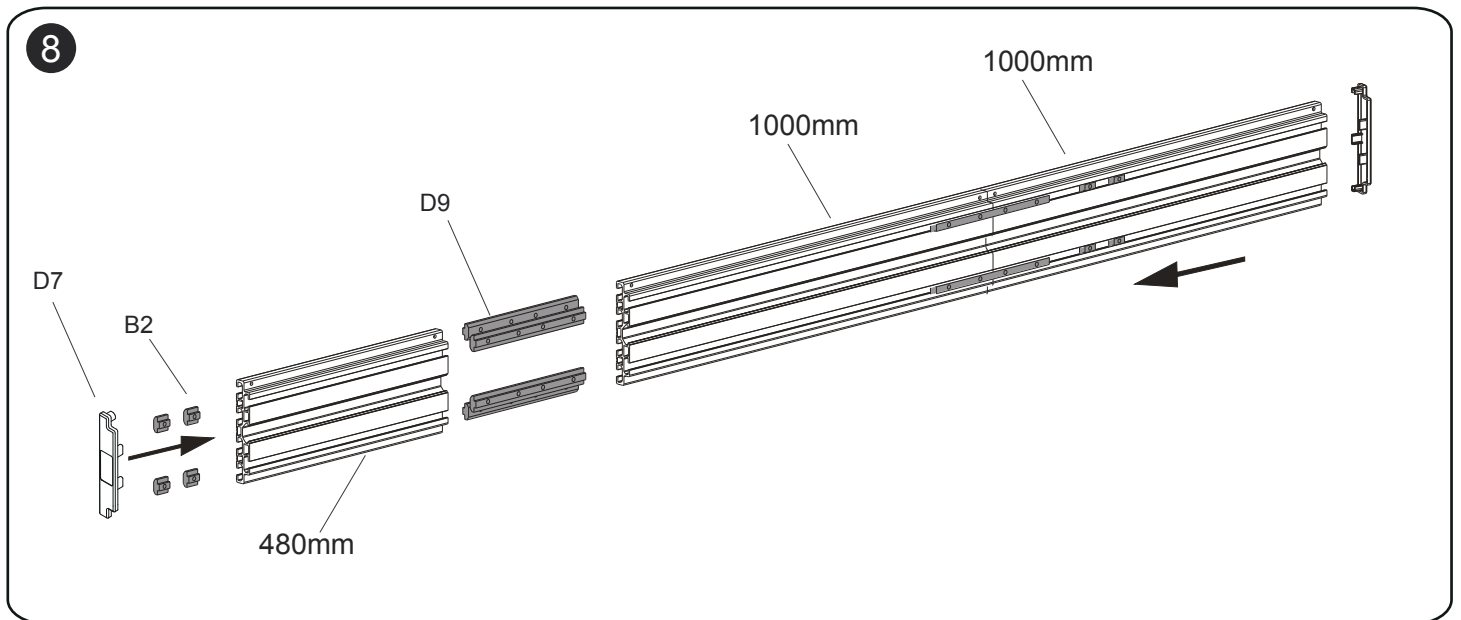
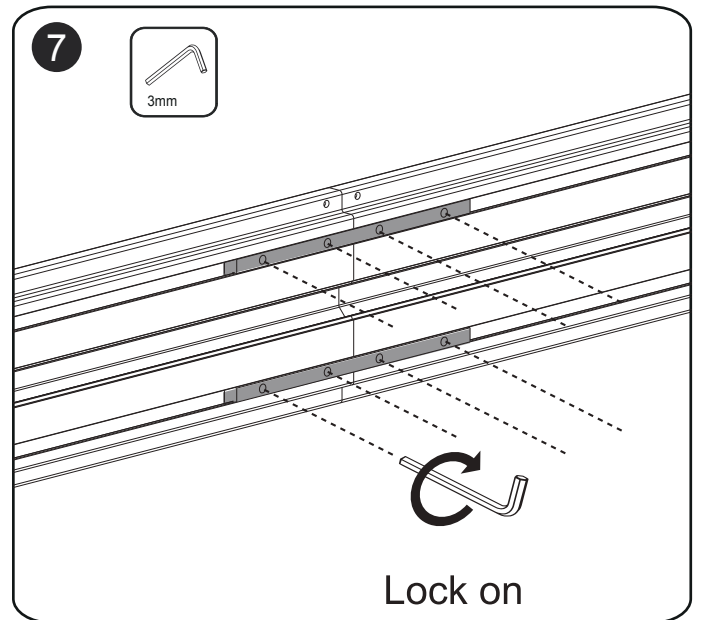
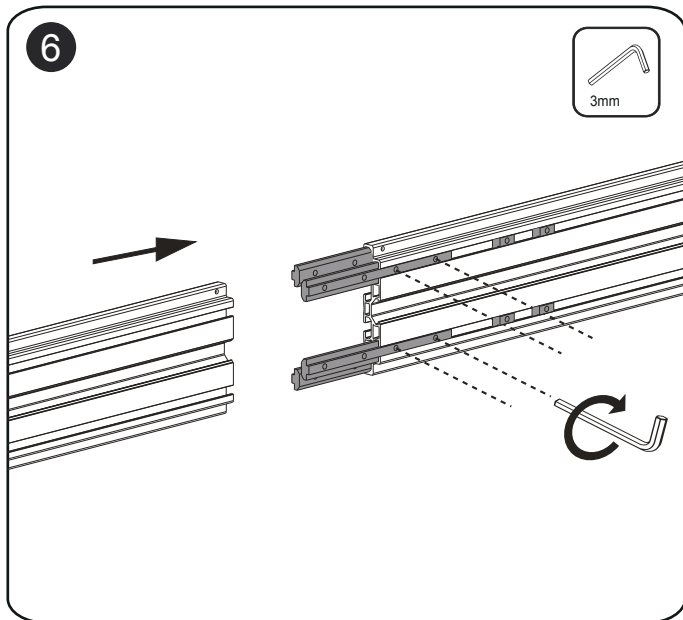
D1	D2	D3	D4	D5	D6	D7	D8	D9	D10
X2	X4	X2	X3	X2	X6	X2	X2	X8	X6

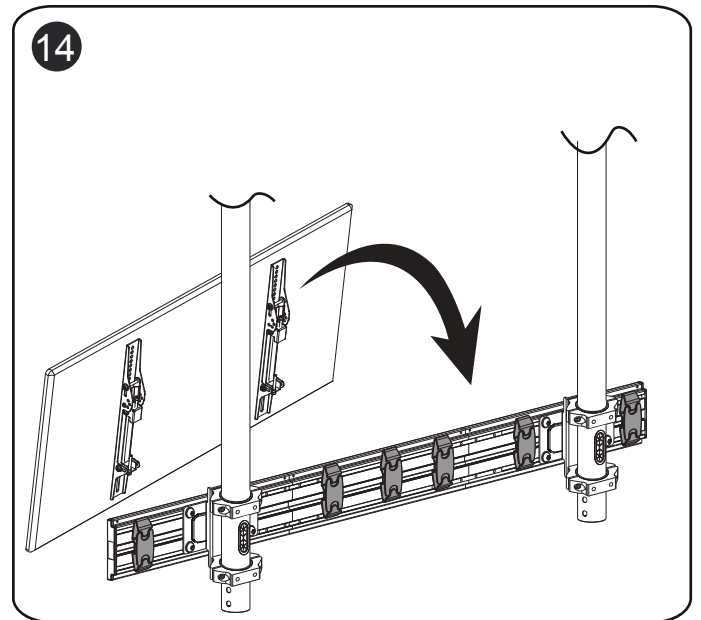
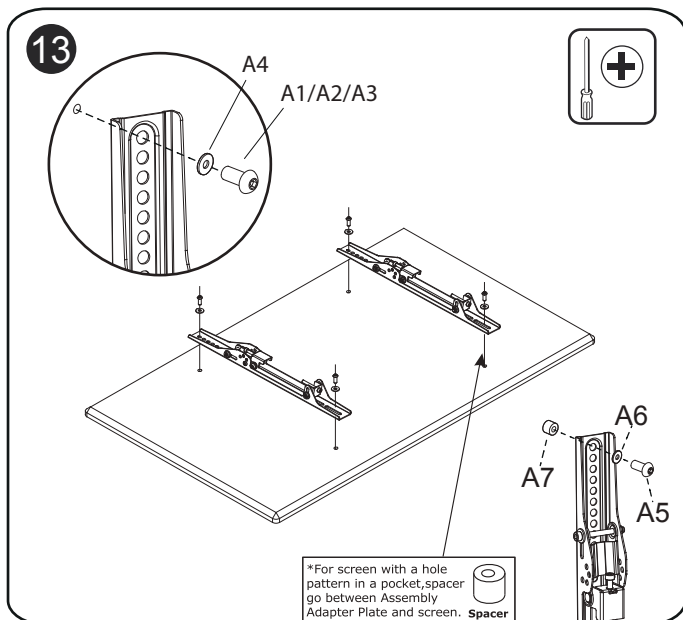
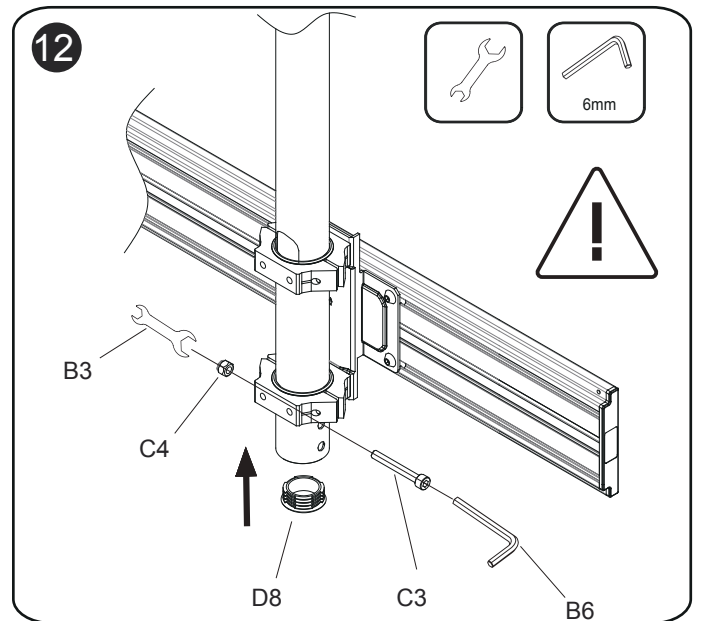
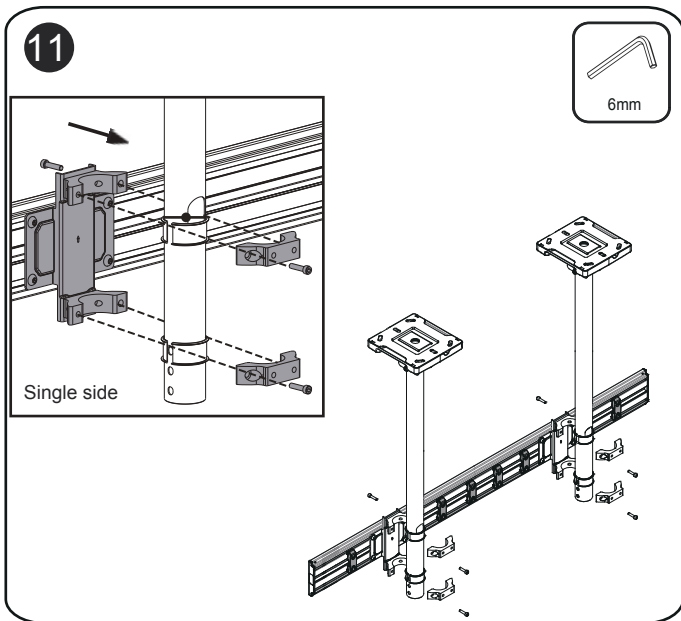
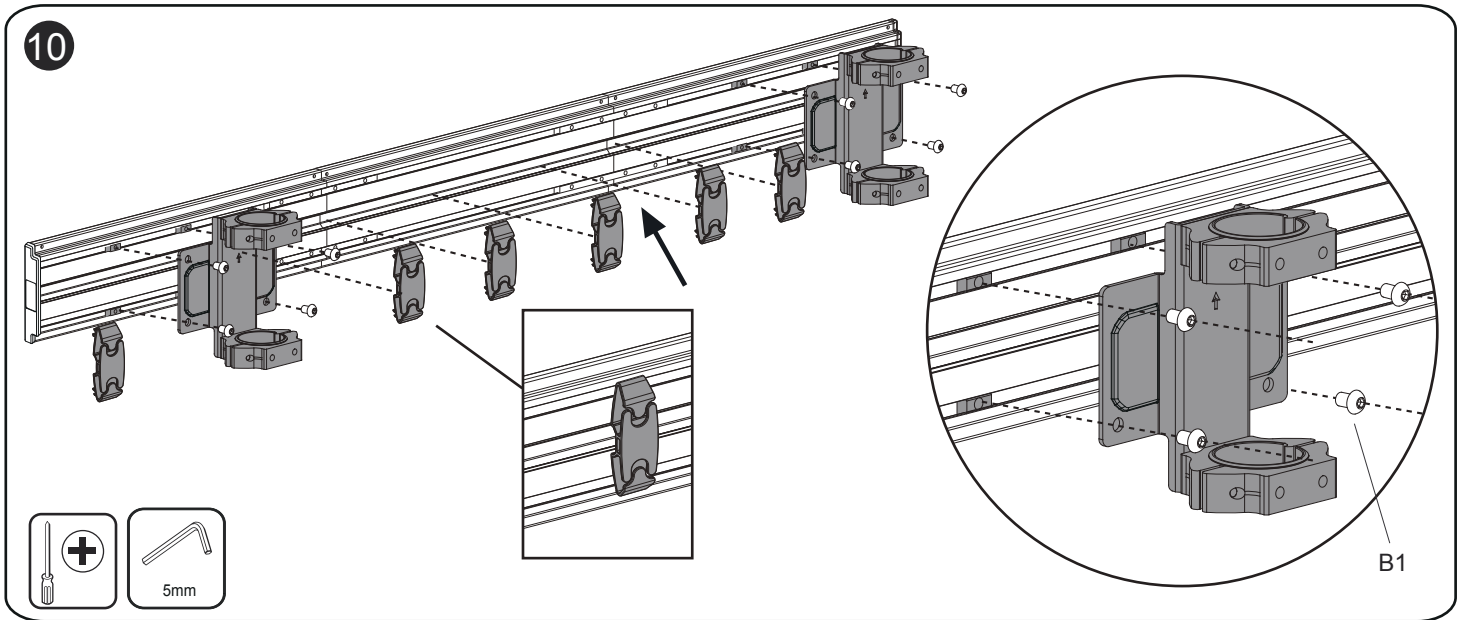
Required Tools



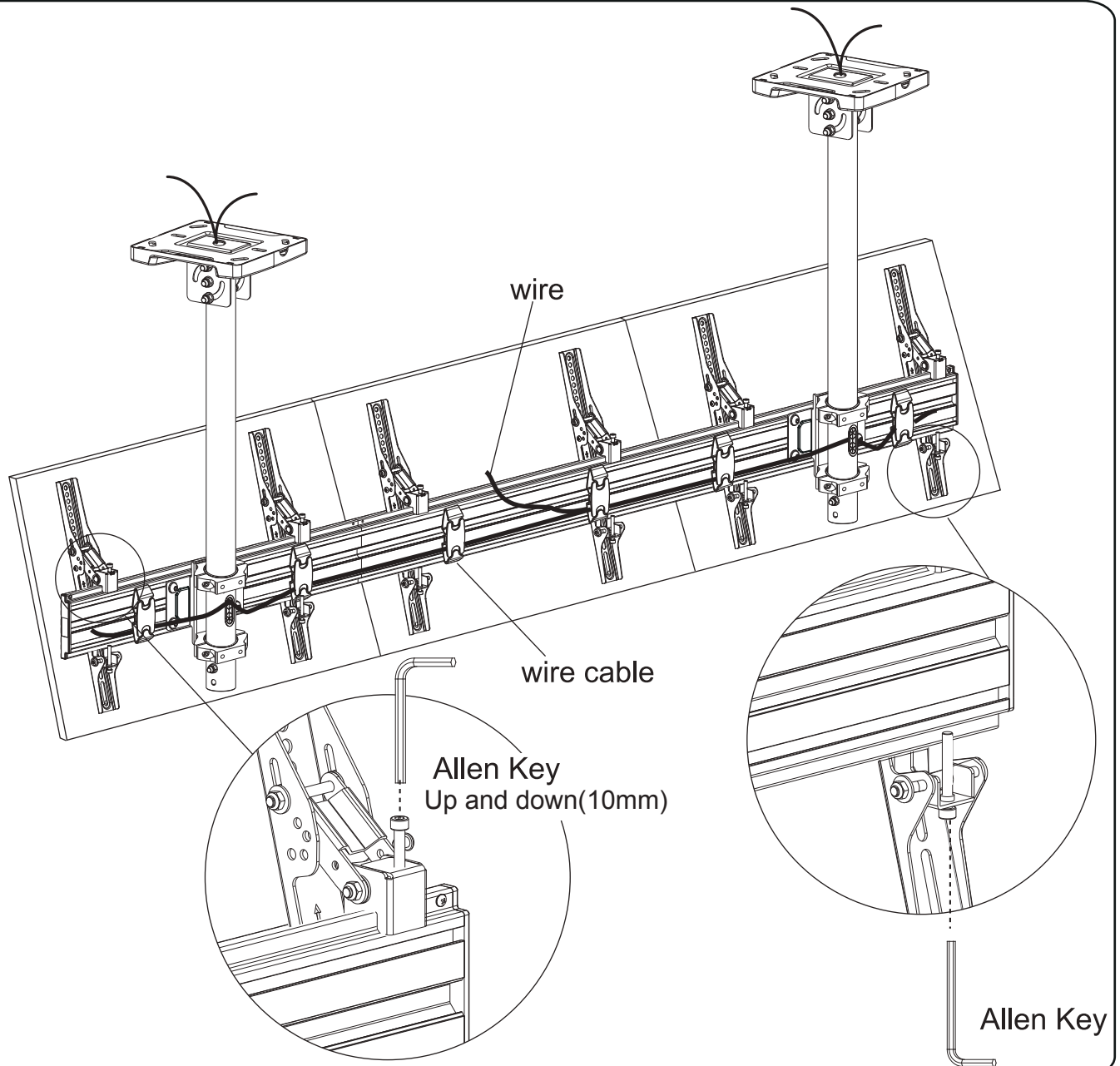
Installation







15



16

