

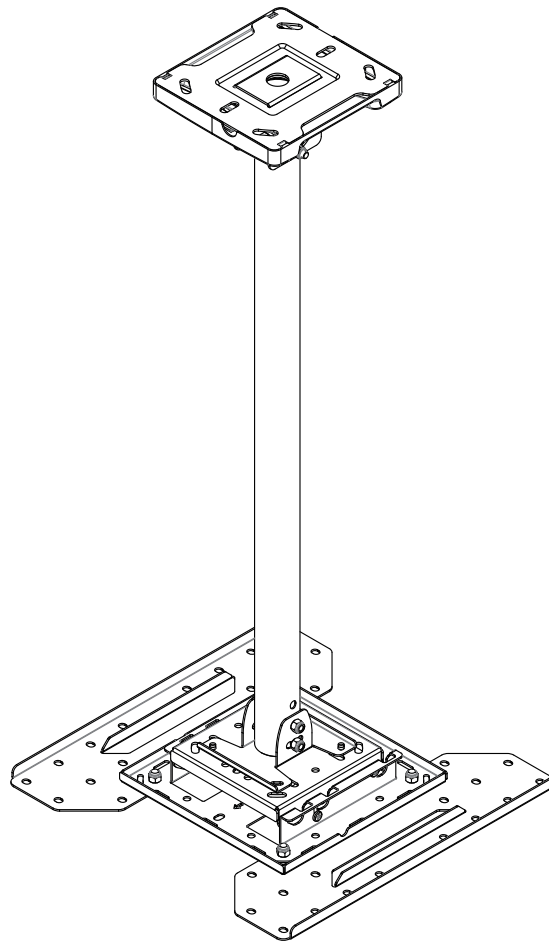
INSTALLATION GUIDE

SECM8

Support 32" to 75" Screen Size

Max Load Capacity: 110lbs (50 kg)

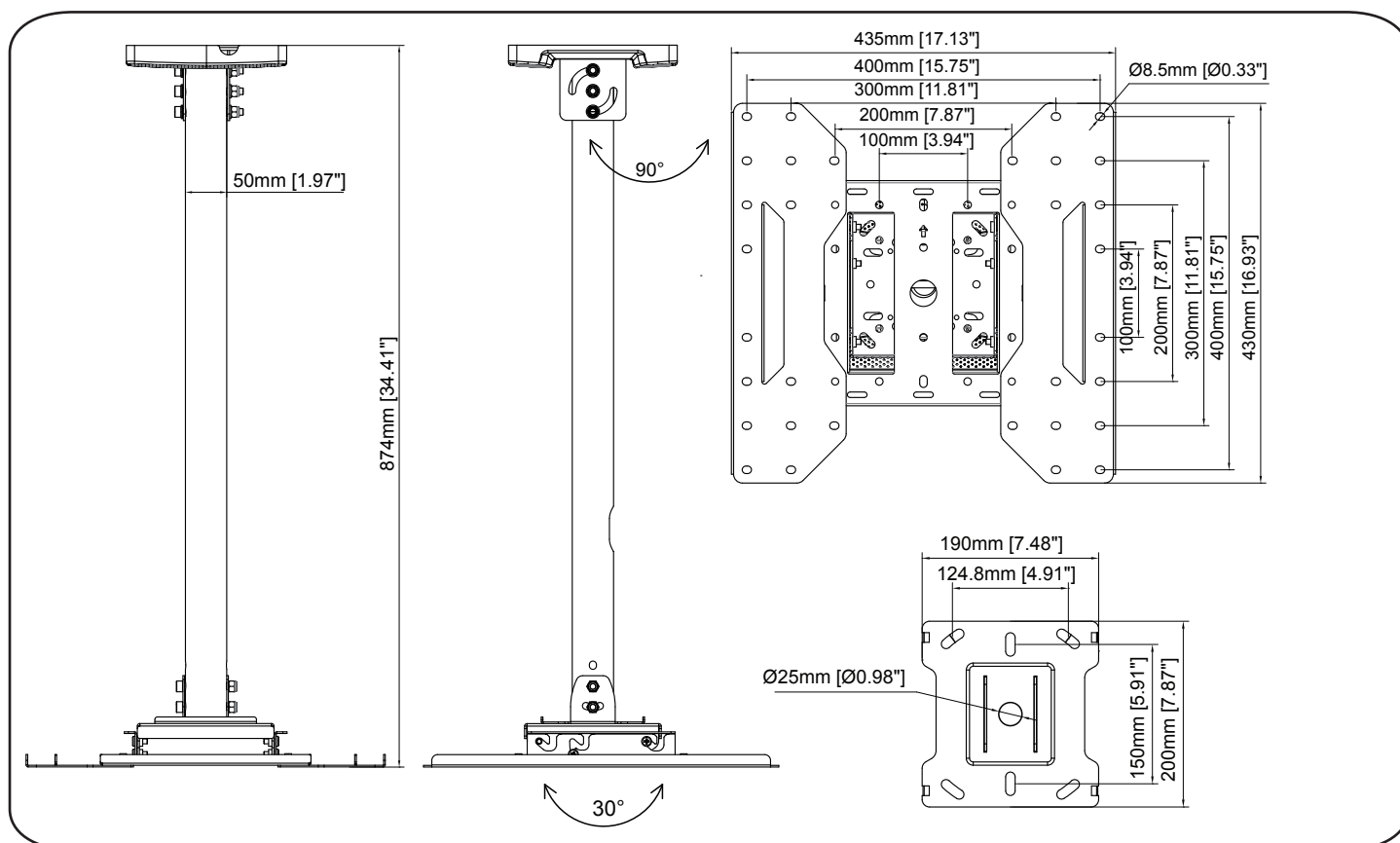
VESA 100x100mm / 400x400mm compatible



⚠ WARNING

- Be sure to read this entire manual thoroughly and you fully understand all the instructions and warning before attempting to begin your installation.
- This product should only be installed by someone who has a basic knowledge of building construction, installations and fully understands these instructions.
- Always have someone assist you to lift and position your equipment.
- Tighten screws and bolts firmly, but do not over tighten. Over tightening can damage the items and greatly reduce their ability to hold. Please refer to suggested torque values where applicable in these instructions.

Dimensions



Parts list

| A1 | A2 | A3 | A4 | A5 | A6 | A7 |
|-------|-------|-------|--------------|-------|--------------|-------------|
| M5X15 | M6X15 | M8X25 | Ø16XØ6.2X1.5 | M8X45 | Ø16XØ8.2X1.5 | Ø13XØ8.2X13 |
| | | | | | | |
| X4 | X4 | X4 | X4 | X4 | X4 | X4 |

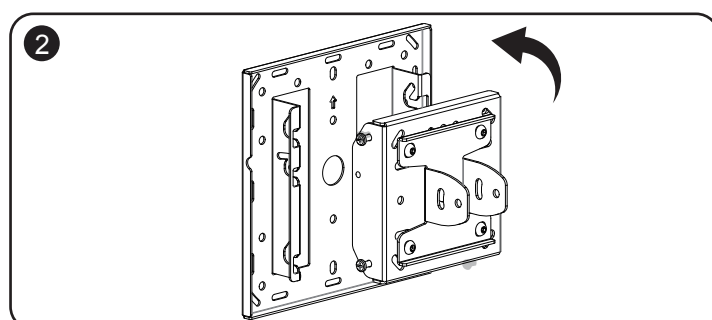
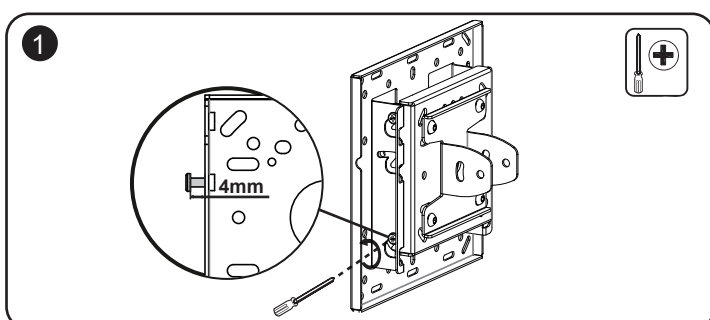
X1

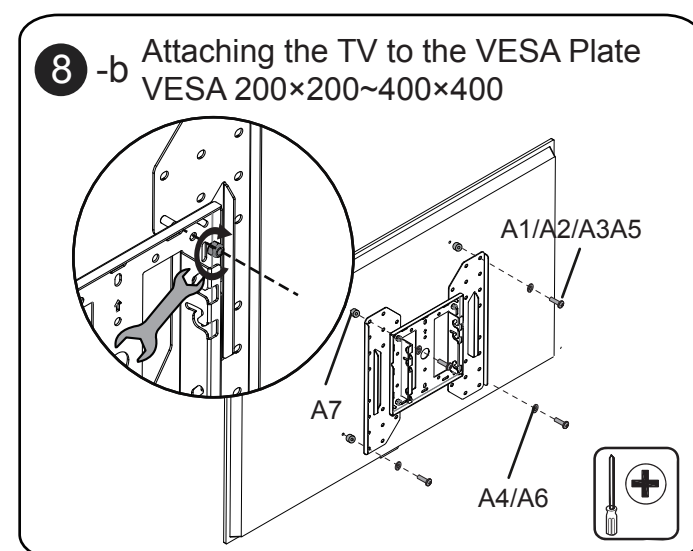
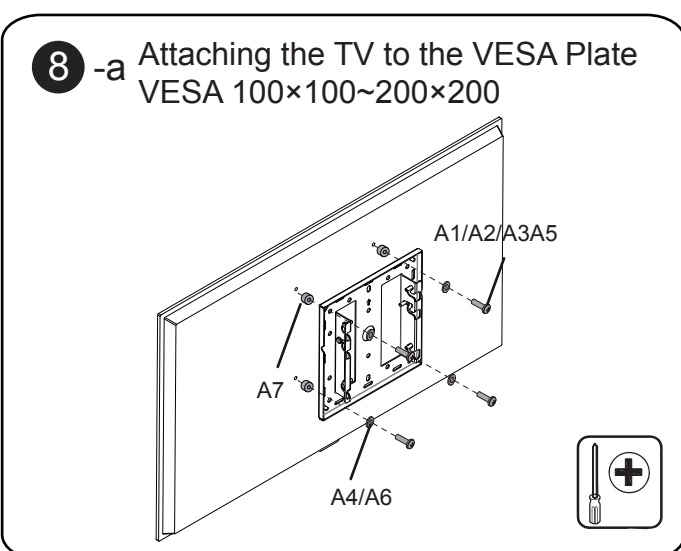
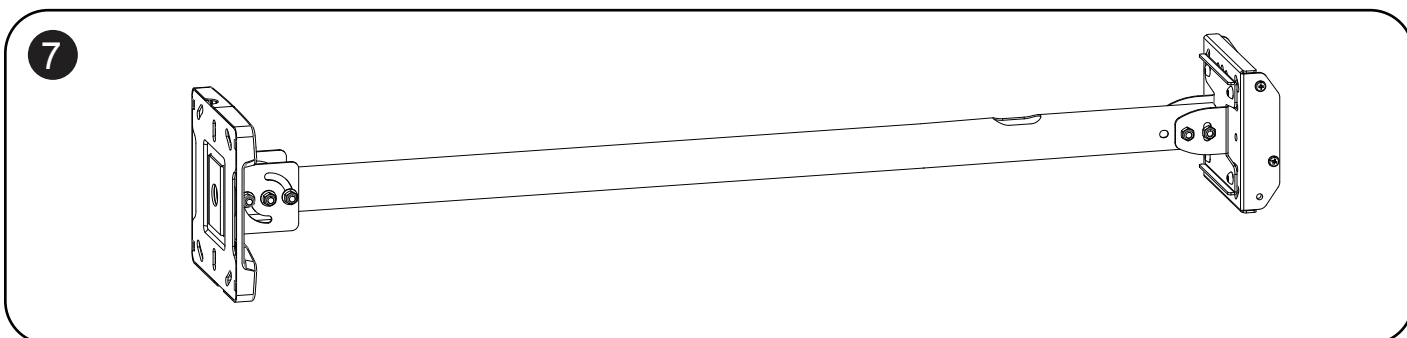
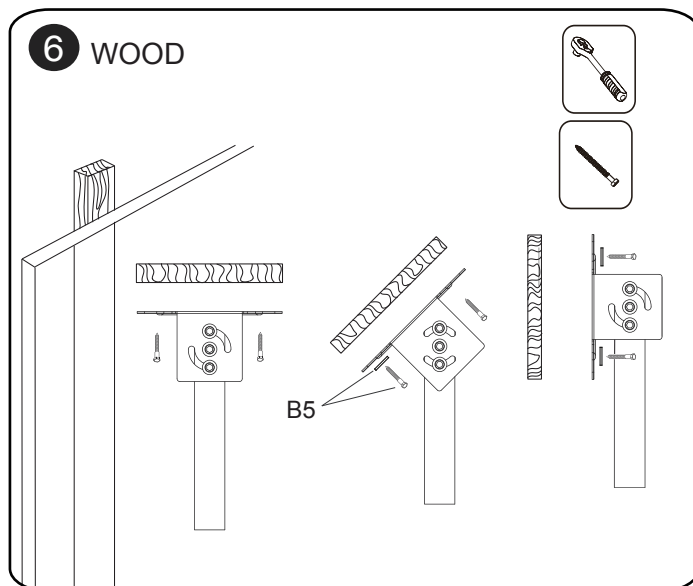
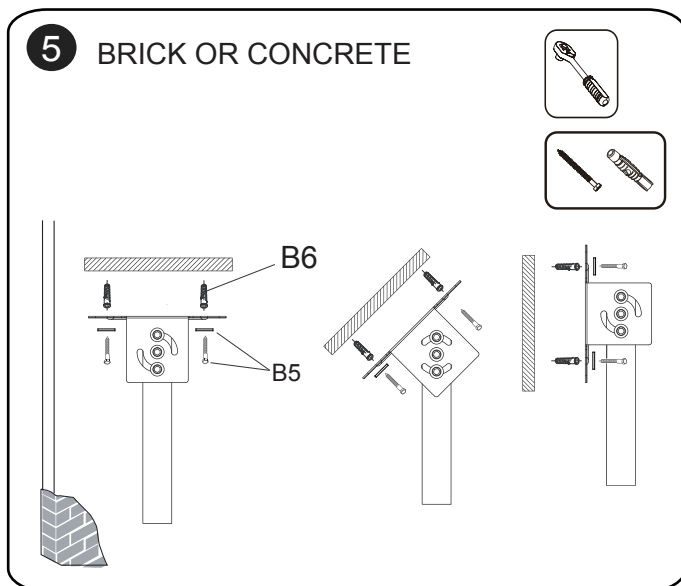
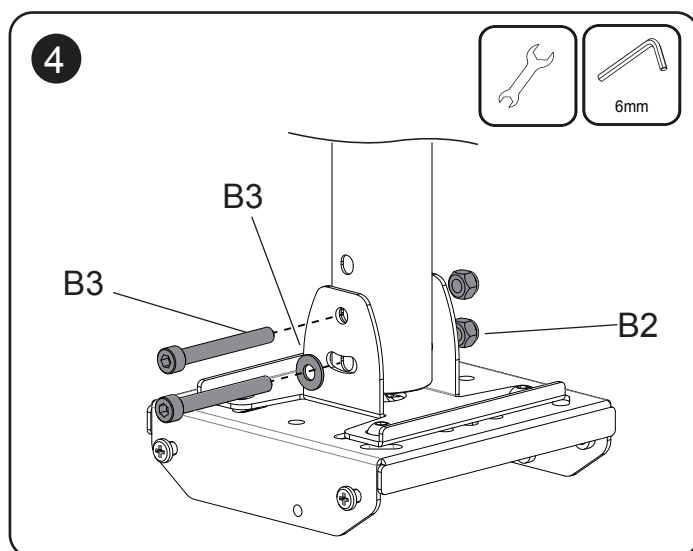
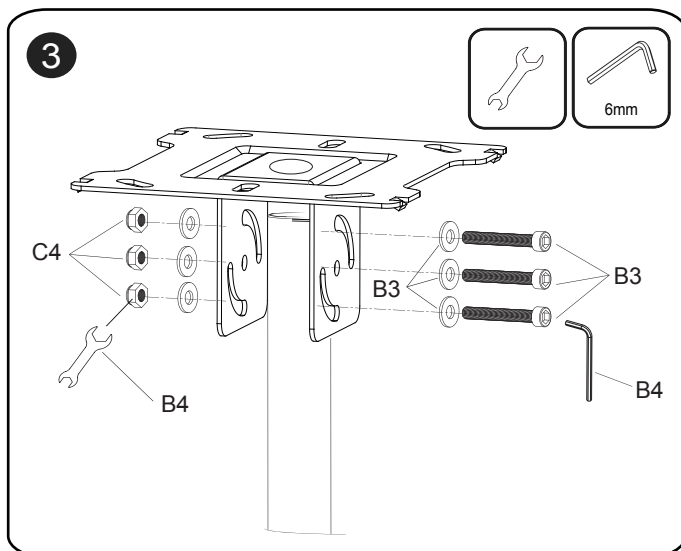
| B1 | B2 | B3 | B4 | B5 | B6 |
|----------|----|-------|---------------|-------------|---------------|
| M6 x16mm | M8 | M8X70 | Ø16x Ø8.2x1.5 | Open-wrench | Ø16x Ø8.2x1.5 |
| | | | | | |
| X2 | X9 | X5 | X8 | X1 | X6 |

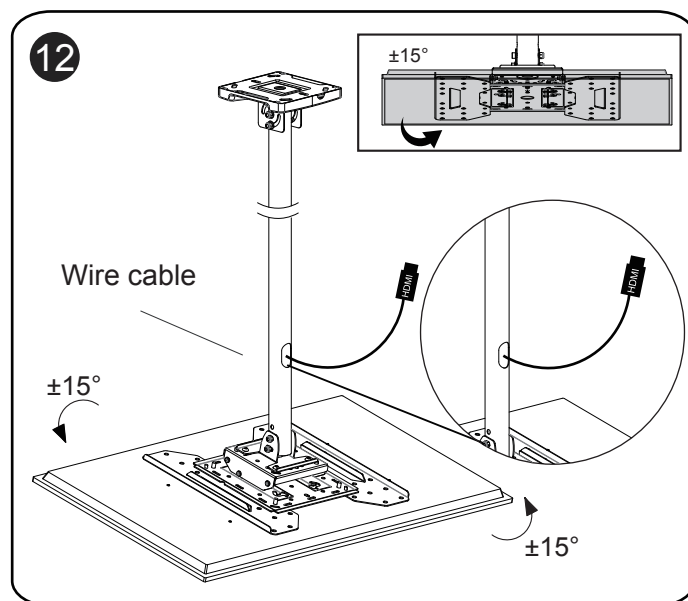
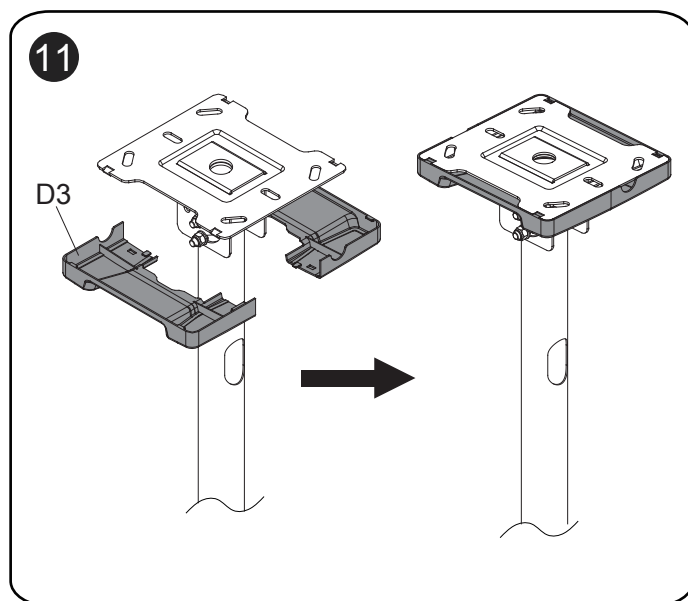
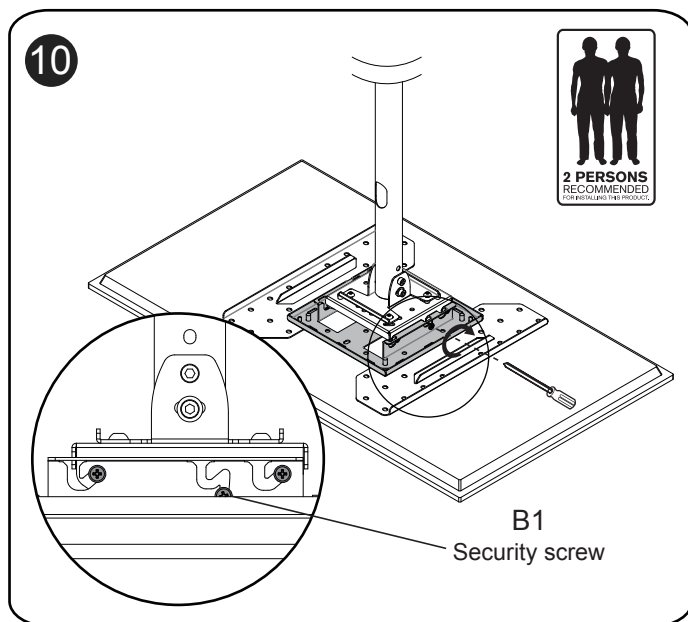
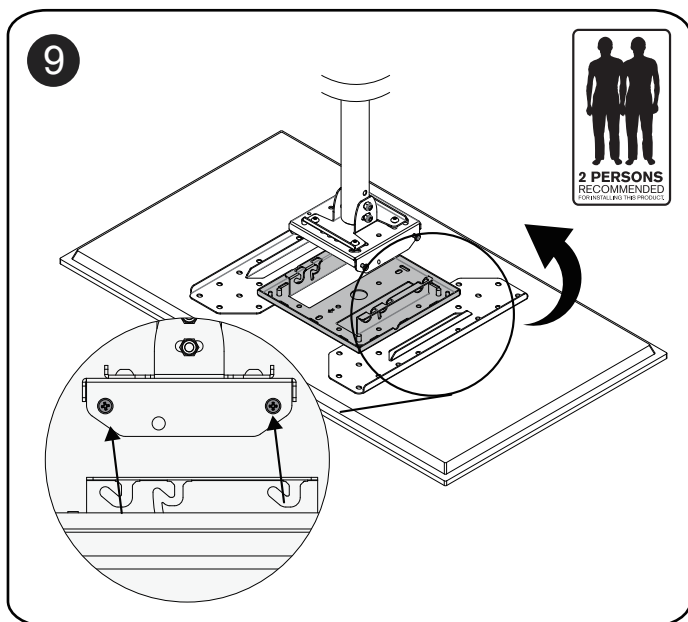
X1

| D1 | D2 | D3 | D4 | D5 |
|----|-------------|----|----|----|
| | | | | |
| X1 | 800mm X1 | X2 | X1 | X2 |

Installation

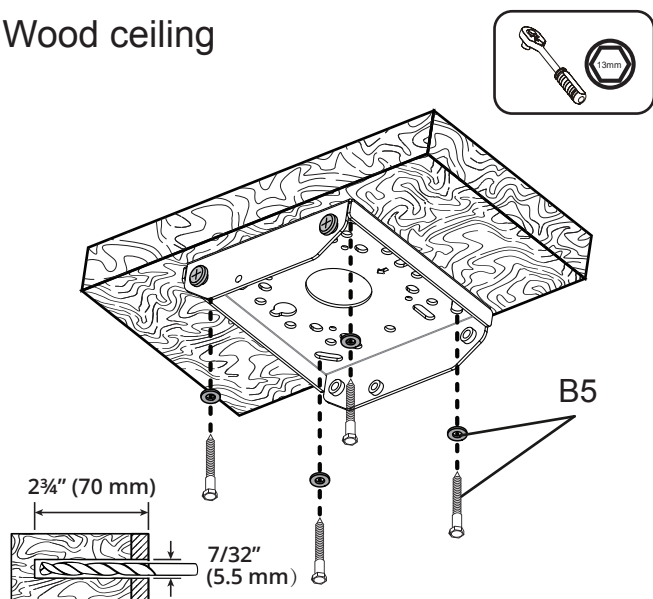






13 OPTIONAL INSTALLATION

Wood ceiling



Concrete wall

