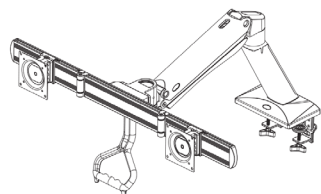


Dual Arm Monitor Mount

SKU: KSMA32B32

INSTRUCTIONS



Fits Most Monitors Size: 24"~32"
Load Capacity: 4.4~33lbs (2~15kg)
VESA: 75x75, 100x100mm

Severe personal injury and property damage can result from improper installation or assembly. Read the following warning carefully before beginning.

- Products must be installed by professional or installer.
- If you do not understand the instructions or have any concerns or questions, please contact a qualified local installer.
- Do not install or assemble if the product or hardware is damaged or missing. If you require replacement parts, please contact your local distributor for assistance.
- This product fits most 24"-32" LCD / monitor; maximum weight of LCD / monitor: 15kg / 33lbs.
- Installer-friendly and straight forward.
- For safe installation, the desk you are mounting to must support minimum 3 times the weight of the total load (the mount, the monitor and all accessories weight).
- Do not use this product for other than the original designed.
- This product contain moving parts, please use with caution.
- When installing monitor, please do not damage electrical wiring or power source.
- Installation and routing of monitor cables on the monitor bracket must comply with electro-technical regulations.
- Importantly, mains- and data-cables must be secured against twisting and squeezing or shearing.
- The manufacturer will bear no responsibility to the desk of mounting, or incidental or consequential damages arising therefrom.
- The manufacturer disclaims any liability for the modifications, improper installation, or installation over the specified weight range. The manufacturer will not be liable for any damages arising out of the use of, or inability to use, the product.
- This product is designed for indoor used only. Use of this product outdoor could lead to product failure and severe personal injury.

▲ This product contains a high pressure gas spring, fire and percussion prohibited. Also it is strictly prohibited to dismantle without professionals. Please return to the manufacturer or hand over to professional agencies if the product is abandoned. In order to ensure the

We reserve the right to modify or alter instructions. No modification or alteration without formal notice.

Symbols

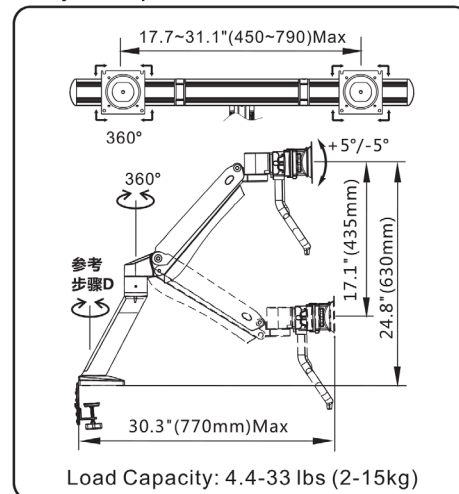
	Tightening Direction loosening Direction		+ : Torque increased - : Torque reduced
	Phillips Screwdriver		By Hand
	Open-End Wrench		Hex Wrench
	Adjustment		Pencil
OPT	Optional	NOTE	Reminder
	Warning		Hand Drill
	Remove		Star Wrench

KSMA32B32

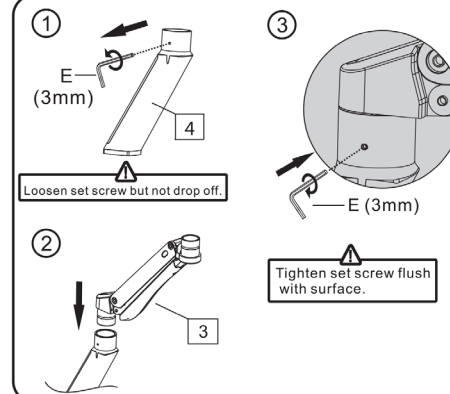
Part List

1	2	3	4	5	6	7	8	9	10
A	B	C	D	E	F	G			
8x M4x12	8x M5x12	4x M6x25	1x M6X15	1x 3mm	1x 4mm	1x Butterfly nut	1x Locking plate	1x 5mm	2x M6X20
						1x Carriage Bolt	1x Base plate		

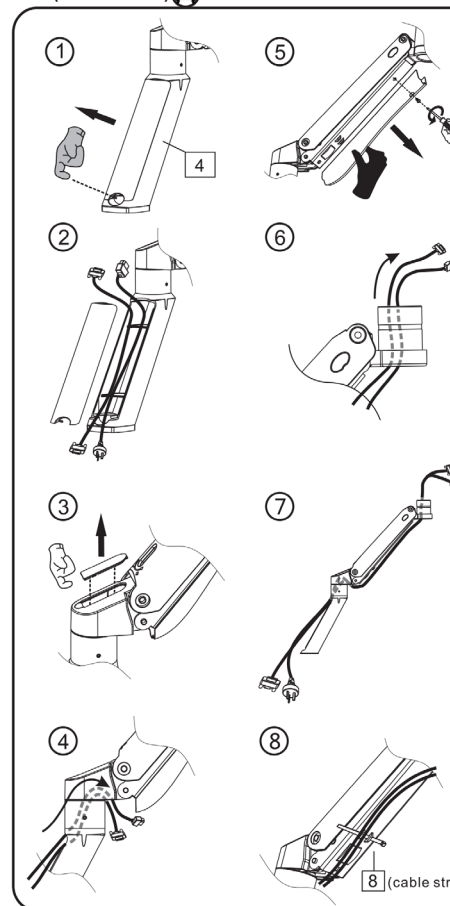
A. Adjustable parameters after full installation :



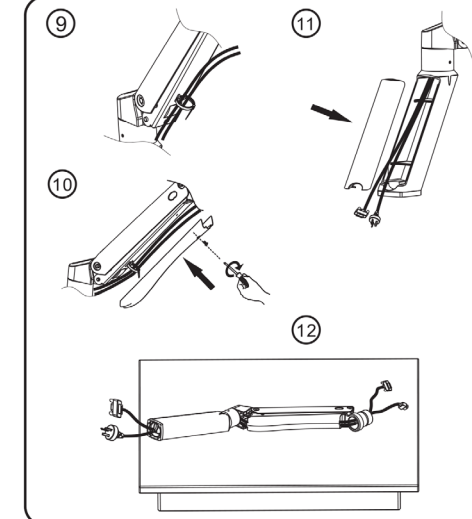
B. Mount arms installation : (Need 2 men)



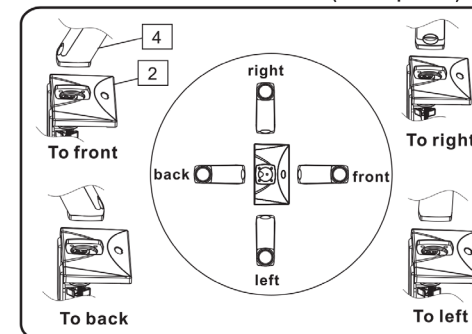
C. Power cables and display lines installation: (Need 2 men)



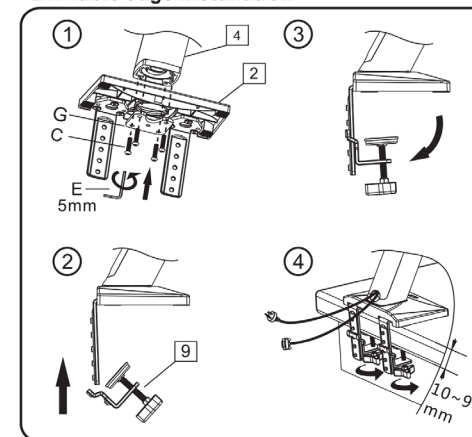
4001080720 A1

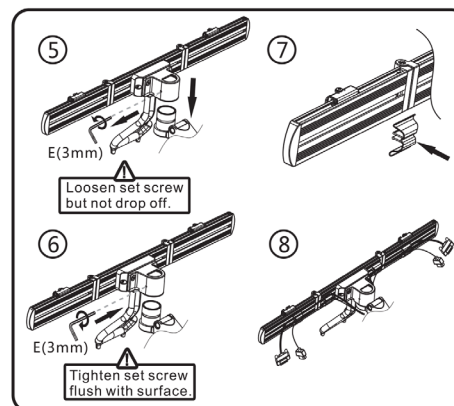


D. Lower arm to base installation (Four options)



E1. Table edge installation





①

Warning: Ensure screws are secured firmly.

A/B

②

Notes:
The pre-set torque is at the minimum.

Disassembly method:

a

b

1.Man A tightns the buckle
2.Man B holds the display ,slowly lifting up,
until taking it off.

The diagram illustrates the process of adjusting the display height. It is divided into two parts: (1) and (2). Part (1) shows a side view of the display assembly mounted on a base. A hand is shown turning a set screw on the side of the display. A curved arrow indicates the direction of rotation. Part (2) shows a top-down view of the display assembly. A hand is shown turning the set screw. A curved arrow indicates the direction of rotation. A label 'E (5mm)' points to the set screw. The diagram also shows the display being moved up and down, labeled 'fig-1' and 'fig-2'.

Diagram illustrating the adjustment of the display tilt:

- Man A holds the display by both hands.
- Man B loosens the swivel by turning it Anti-clockwise "↺".
- Man A adjusts the tiltangle (within $\pm 12^\circ$) until required position.
- Man B tights the swivel by turning it clockwise "↻" to hold the display in position before Man A let it go.

Warning

- 1.Ensure display has been put onto mount.
- 2.Read your display packaging or manual to find out display net weight.

3. Ensure display net weight between 4.4-33lbs(2-15kg)

Adjustment sign

— +
 Anti-clockwise reduce clockwise to increase
 tension(carry less weight) tension(carry more weight)

warning!



www.slimlinewarehouse.com.au