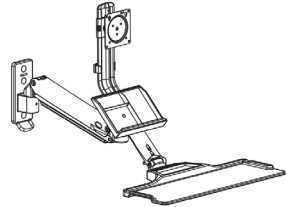


Wall Mount Workstation

SKU: KSWM27B32

INSTRUCTIONS



Fits Most Displays Size: 19"~27"
Load Capacity: 4.4~19.8lbs (2~9kg)
VESA: 75x75, 100x100mm

- Severe personal injury and property damage can result from improper installation or assembly. Read the following warning carefully before beginning.
- Products must be installed by professional or installer.
 - If you do not understand the instructions or have any concerns or questions, please contact a qualified local installer.
 - Do not install or assemble if the product or hardware is damaged or missing. If you require replacement parts, please contact your local distributor for assistance.
 - This product fits most 19"-27" LCD / monitor; maximum weight of LCD / monitor: 9kg / 19.8lbs.
 - Installer-friendly and straight forward.
 - For safe installation, the desk you are mounting to must support minimum 3 times the weight of the total load (the mount, the monitor and all accessories weight).
 - Do not use this product for other than the original designed.
 - This product contain moving parts, please use with caution.
 - When installing monitor, please do not damage electrical wiring or power source.
 - Installation and routing of monitor cables on the monitor bracket must comply with electro-technical regulations.
 - Importantly, mains- and data-cables must be secured against twisting and squeezing or shearing.
 - The manufacturer will bear no responsibility to the desk of mounting, or incidental or consequential damages arising thereof.
 - The manufacturer disclaims any liability for the modifications, improper installation, or installation over the specified weight range. The manufacturer will not be liable for any damages arising out of the use of, or inability to use, the product.
 - This product is designed for indoor used only, use of this product outdoor could lead to product failer and severe personal injury.
 - ▲ This product contains a high pressure gas spring, fire and percussion are prohibited. Also it is strictly prohibited to dismantle without professionals. Please return to the manufacturer or hand over to professional agencies if the product is abandoned. In order to ensure the performance of gas spring, full direction adjustment of the product arm is recommended several times per month.

Symbols

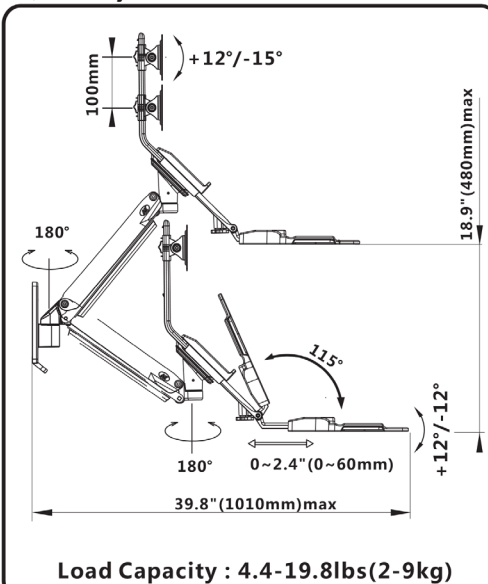
	Tightening Direction		+ : Torque increased - : Torque reduced
	Tightening Direction		+ : Torque increased - : Torque reduced
	Phillips Screwdriver		By Hand
	Open-End Wrench		Hex Wrench
	Adjustment		Pencil
OPT	Optional	NOTE	Reminder
	Warning		Hand Drill
	Remove		Star Wrench

KSWM27B32

Part List

1	2	3
4	5	6
A	B	C
4x	4x	1x
D	E	F
Φ7x70mm	10-70	3mm 4mm 5mm
Φ16xΦ6.2x1.5mm	3x each	1x 1x 1x

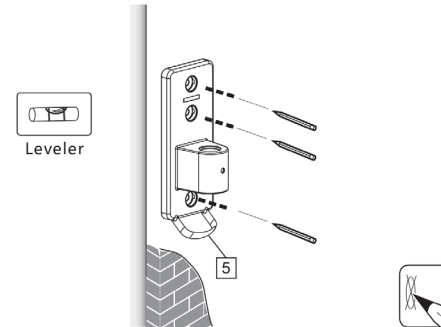
A. Full adjustment after installation



B1. Install wall plate onto masonry or solid concrete

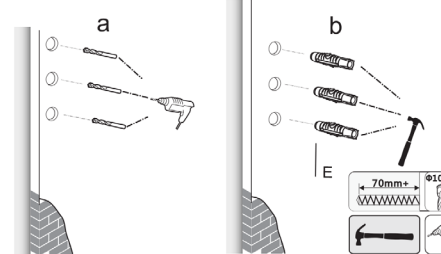
Step 1.

1. Use pen to mark 3 screw holes, ensure leveler bubble is at the center.



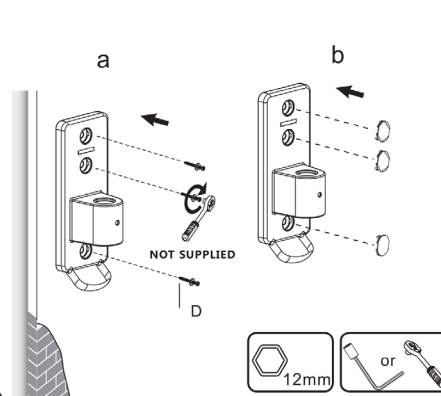
Step2.

1. Use hand drill with 10mm drill bit (Not supplied), drill hole on marked locations with 70mm+ depth.
2. Insert anchor (E) into the hole and hammer it until flush with the wall surface



Step3

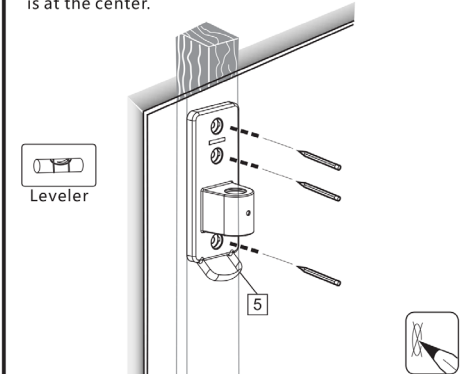
1. Put screws with washers into the anchors. Use socket wrench (Not supplied) to tighten top screw first, and check the level before tightening the other two. Ensure three screws are tightened properly.
2. Cover the holes by plastic caps.



B2. Install wall plate onto wood stud

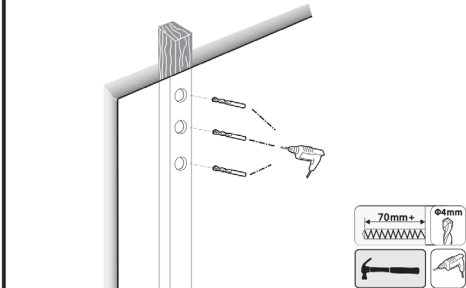
Step 1.

1. Use pen to mark 3 screw holes, ensure leveler bubble is at the center.



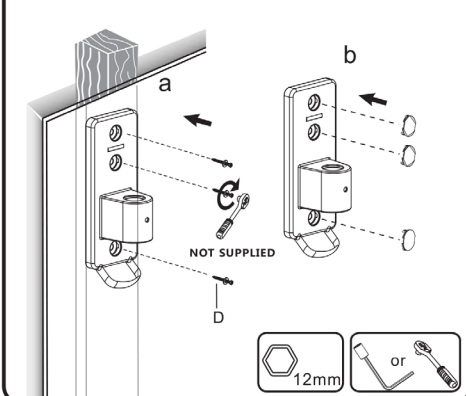
Step2.

1. Use hand drill with 4mm drill bit (Not supplied), drill hole on marked locations with 70mm+ depth.

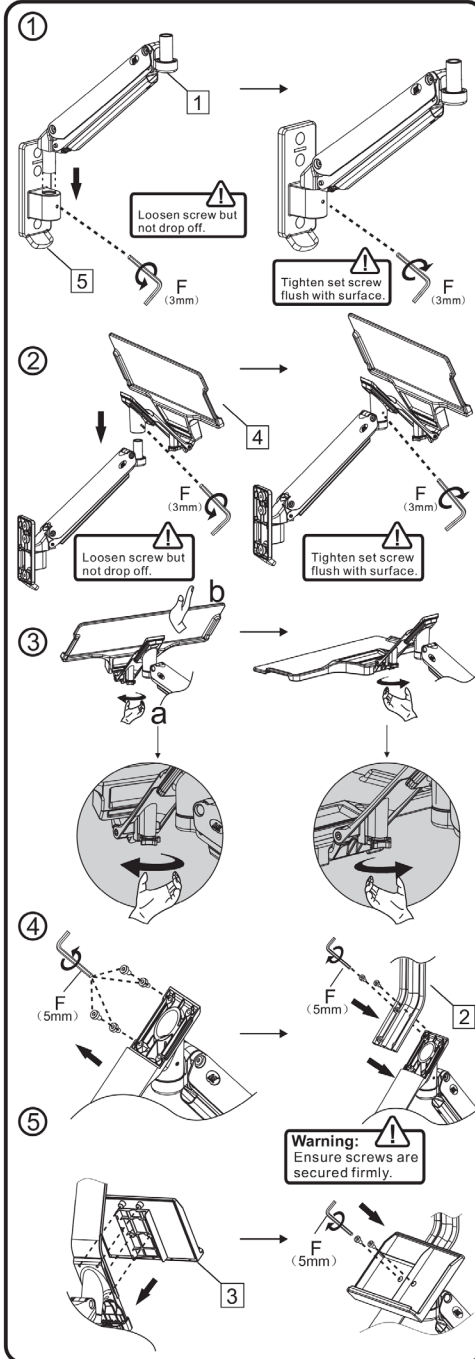


Step3

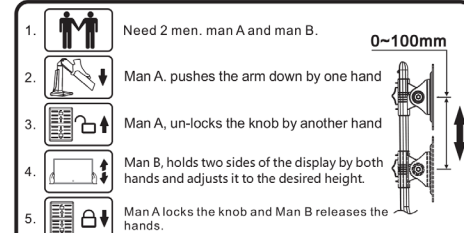
1. Put screws with washers into the anchors. Use socket wrench (Not supplied) to tighten top screw first, and check the level before tightening the other two. Ensure three screws are tightened properly.
2. Cover the holes by plastic caps.



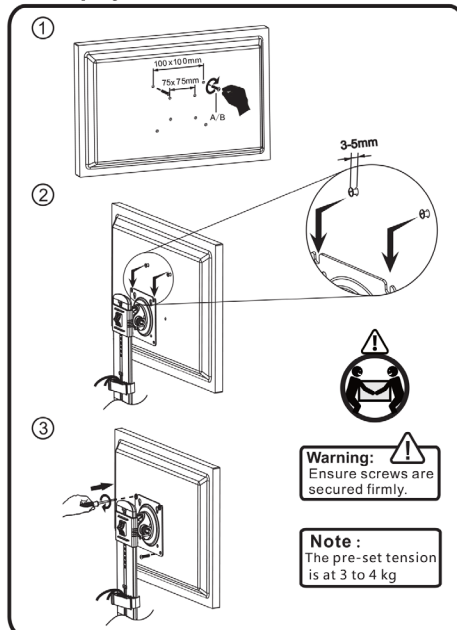
C. Workstation assembly & installation



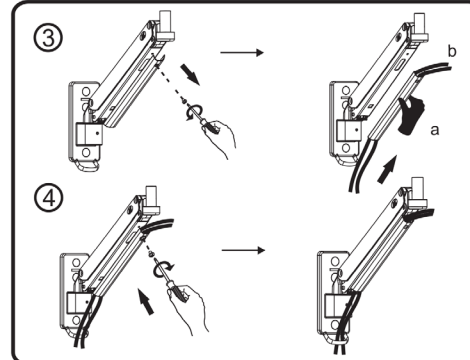
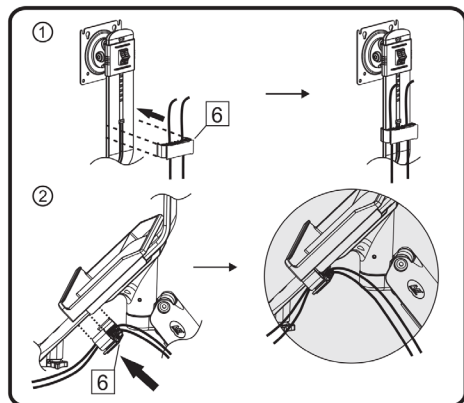
D. Display height adjustment



E. Display installation

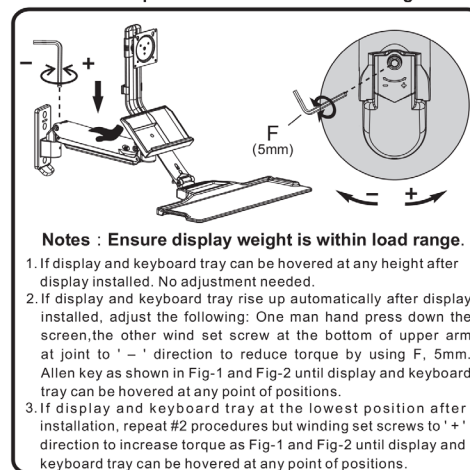


F. Power and display cables management

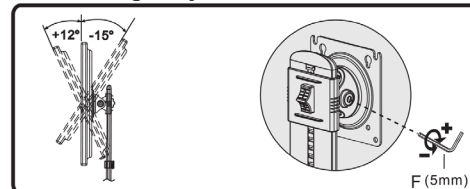


G. Torque adjustment

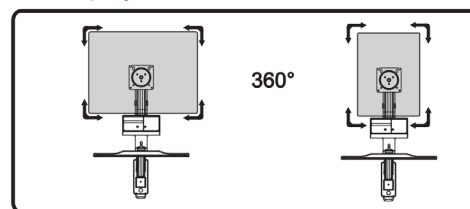
"+" : Torque increase direction shown fig-1
 "-" : Torque decrease direction shown fig-2



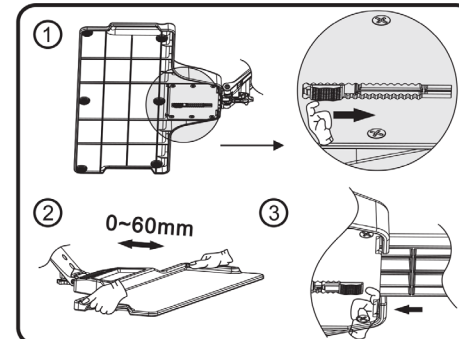
H. Tilt angle adjustment



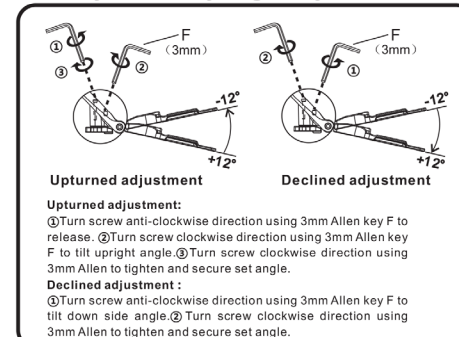
I. Display rotation



J. Keyboard tray extension adjustment



K. Keyboard tray angle adjustment



TENSION ADJUSTMENT AFTER INSTALLED

Warning

Do not adjust tension without putting on display.

1. Ensure display has been put onto mount.
2. Read your display packaging or manual to find out display net weight.
3. Ensure display net weight between 4.4~19.8lbs (2~9kg).

Adjustment sign

Clockwise to reduce tension (carry less weight)
 Anti-clockwise to increase tension (carry more weight)

Warning !



www.slimlinewarehouse.com.au