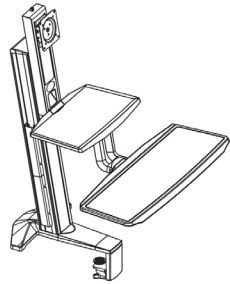


Stand Up Desk Attachment

SKU: KS32L80

INSTRUCTIONS



Fits Display Size : 17"~32"
Load Capacity : 4.4~24.2 lbs (2~11 kg)
VESA : 75 x 75 , 100 x 100 mm

- Severe personal injury and property damage can result from improper installation or assembly. Read the following warning carefully before beginning.
- Products must be installed by professional or installer.
 - If you do not understand the instructions or have any concerns or questions, please contact a qualified local installer.
 - Do not install or assemble if the product or hardware is damaged or missing, if you require replacement parts, please contact your local distributor for assistance.
 - This product fits most 17"-32" LCD/LED monitor, maximum weight of LCD /LED monitor: 4.4-24.2lbs(2-11kg).
 - Installer-friendly and straight forward.
 - For safe installation, the desk you are mounting to must support minimum 3 times the weight of the total load (the mount, the monitor and all accessories weight).
 - Do not use this product for other than the original designed.
 - This product contain moving parts, please use with caution.
 - When installing monitor, please do not damage electrical wiring or power source.
 - Installation and routing of monitor cables on the monitor bracket must comply with electro-technical regulations.
 - Importantly, mains- and data-cables must be secured against twisting and squeezing or shearing.
 - The manufacturer will bear no responsibility to the desk of mounting, or incidental or consequential damages arising thereot.
 - The manufacturer disclaims any liability for the modifications, improper installation, or installation over the specified weight range. The manufacturer will not be liable for any damages arising out of the use of, or inability to use, the product.
 - This product is designed for indoor used only, use of this product outdoor could lead to product failure and severe personal injury.

Symbols

	Tightening Direction loosening Direction		+ : Torque increased - : Torque reduced
	Phillips Screwdriver		By Hand
	Open-End Wrench		Hex Wrench
	Adjustment		Pencil
OPT	Optional	NOTE	Reminder
	Warning		Hand Drill
	Remove		Star Wrench

KS32L80

Part List

1	5
2	6
3	7
4	8
10	11
A	C
4x M4x12	4x M6x25
B	D
4x M5x12	4x M6X12
	1x 4mm
	1x 5mm

Transformer pocket

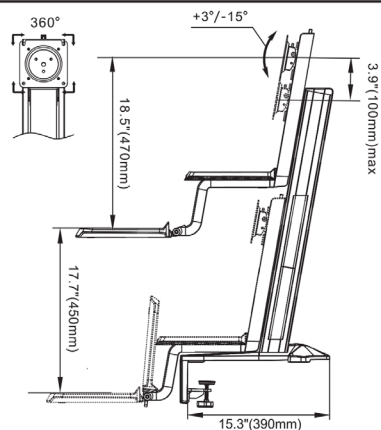
2x Cable cover left

2x Cable cover right

Cable sleeve

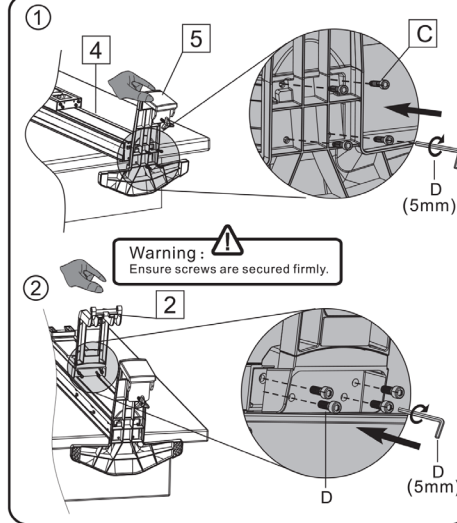
4x Cable strap

A. Full adjustment after installation

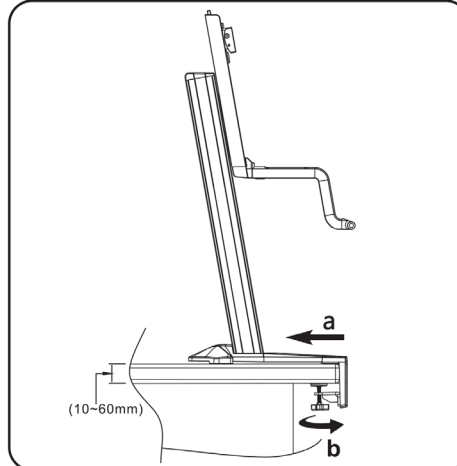


Load Capacity : 4.4-24.2lbs (2-11kg)

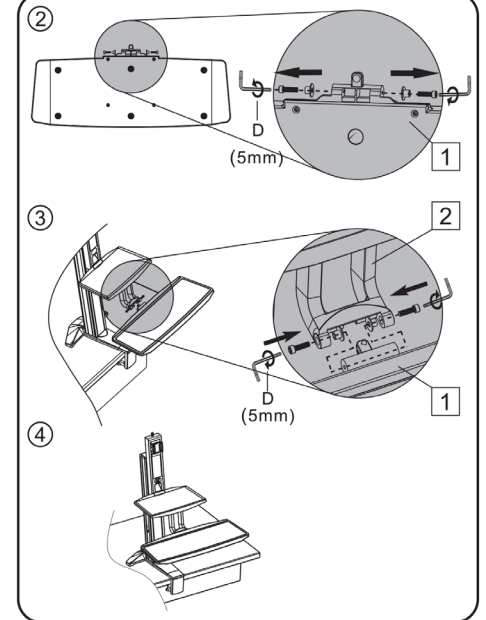
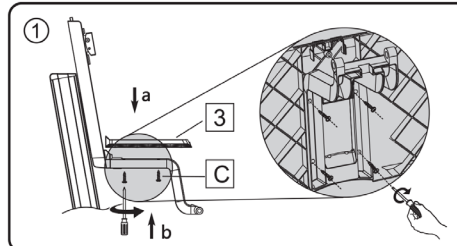
B:Work-station Installation (Need 2 men)



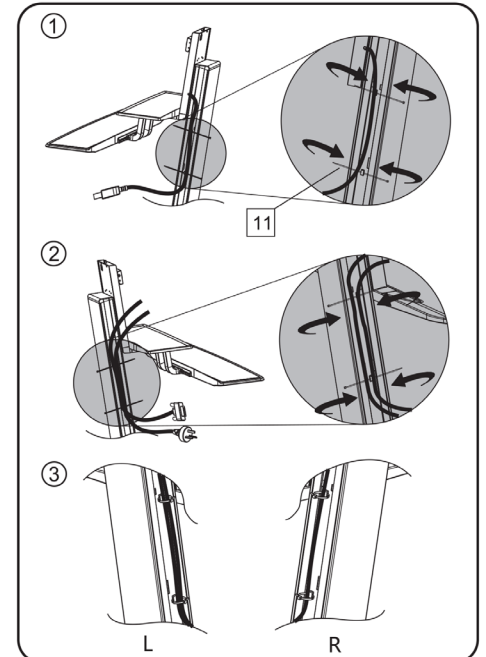
C. Install to desk edge

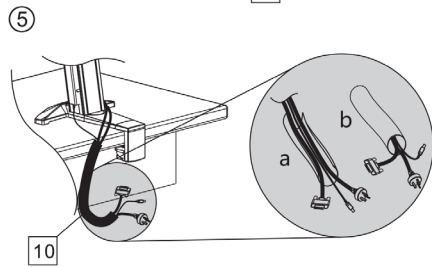
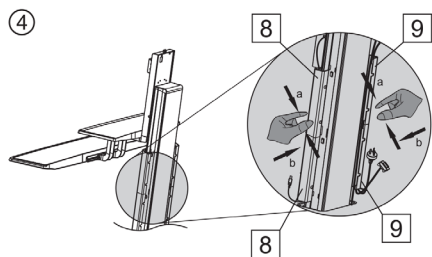


D. Worksurface and keyboard installation

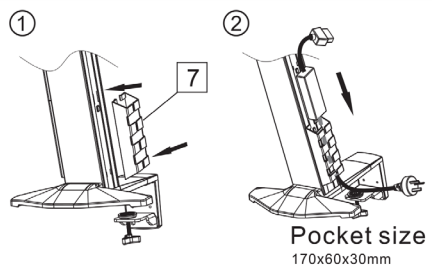


E. Power and display lines installation



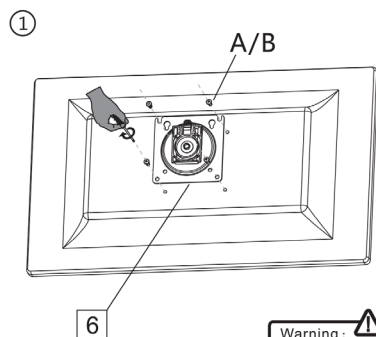


F. Transformer Pocket installation

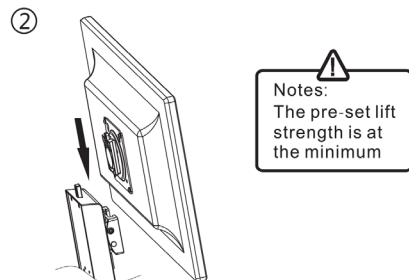


Pocket size
170x60x30mm

G. Display installation

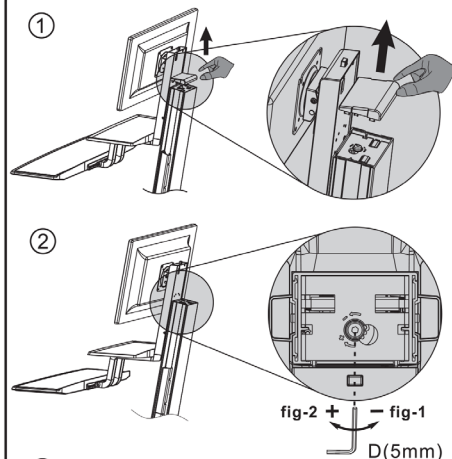


Warning:
Ensure screws are
secured firmly.



H. Lift strength adjustment

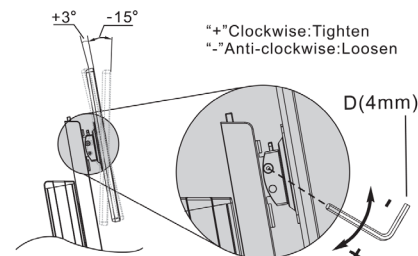
Direction "+" increase.
Direction "-" decrease



Ensure display is installed and load capacity within 2.-11kg/4.4-24.2lbs

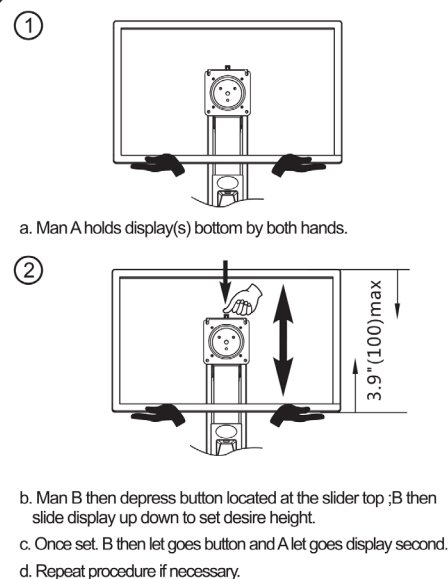
- A If work surface with equipment can be hovered at any height along the slide, no adjustment needed.
- B If work surface with equipment can not be stopped at any height along the slide, then grasped and pull open cover located on top of the slider (fig#1)
- B1. If sliding up freely, then use 5mm allen key to wind set screw "- anti - clockwise to reduce lifting force until it stays at any point (fig#2). attach cover (fig#3).
- B2. If sliding down freely, then use 5mm allen key to wind clockwise to increase lifting force until it stays at any point (fig#2) attach cover (fig #3).

I. Tilt angles adjustment

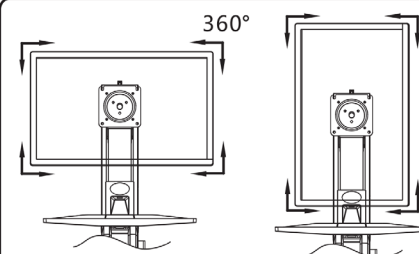


- #1. If display can be tilted and stay, no adjustment needed.
- #2. If display can be tilted but slide down, tighten screw according to Fig above until display stay as it is.

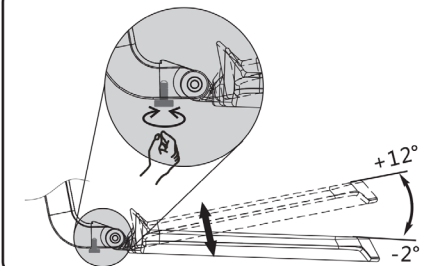
J. Display height adjustment



K. Displays rotation



L. Keyboard angle adjustment

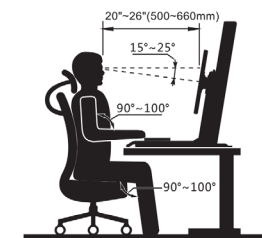
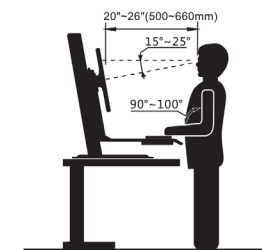


Lift strength After mount installed



Warning

1. Ensured display has been installed
 2. Ensured display net weight is within 4.4 - 24.2 lbs
 3. Ensured all screws are secured firmly
- Adjustment sign



www.slimlinewarehouse.com.au